

SNAP-ED WORKS 2019

Supplemental Nutrition Assistance Program – Education



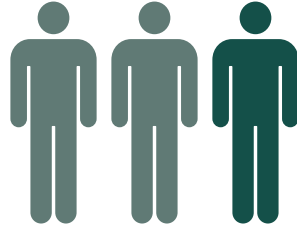
FOOD WISE
Healthy choices, healthy lives.

UW-MADISON EXTENSION

THE CHALLENGE



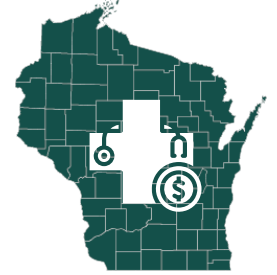
Almost **1 in 11** Wisconsin households face hunger/food insecurity.



2 in 3 Wisconsin adults are overweight or obese.



1 in 7 Women Infants and Children (WIC) program participants aged 2-4 years old are obese.



\$3.1 Billion Cost of obesity in Wisconsin

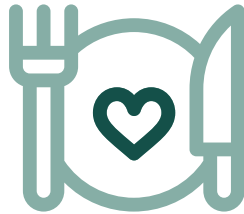
THE SOLUTION

EXPOSE



children to new fruits and vegetables and why they are important.

TEACH



parents how to plan, buy and prepare healthy meals.

EMPOWER



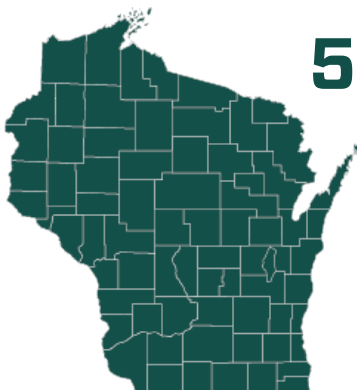
families with limited resources to choose healthful diets and become more food secure by spending food dollars wisely.

SUPPORT



communities in making the healthy choice the easy choice where people live, learn, work and play.

PROGRAM REACH – Promoting Health and Nutrition through Partnership



53,724 PARTICIPANTS

IN **69 WISCONSIN COUNTIES**

COLLABORATED WITH
69 HEALTH COALITIONS

SUPPORTED **194** PARTNERS

Delivered education to individuals at

1,187 settings.



SNAP-ED WORKS 2019

Supplemental Nutrition Assistance Program – Education

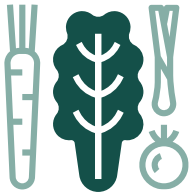


FOOD WISE
Healthy choices, healthy lives.

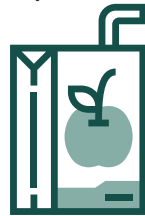
UW-MADISON EXTENSION

HEALTHY INTENTIONS, HEALTHY BEHAVIORS

57% of teachers reported that students are eating more vegetables at school.



31% of all adult participants reported drinking sugar sweetened beverages less frequently.



58% of teachers reported that their students washed their hands more often.



55% of parents reported that their child was physically active for at least 60 minutes per day.



SUPPORTING COMMUNITIES

In federal fiscal year 2019, FoodWise supported 108 community partners with efforts that resulted in 472 environmental changes.

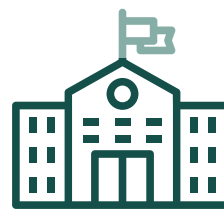
Established gardens in **15** settings and increased garden produce where SNAP-eligible audiences live, eat, learn, shop and play.



Increase in use and accessibility of SNAP/electronic benefits transfer (EBT) at **16** farmers markets



Improvements in school food environments and established school wellness policies



Changes in procurement policies and practices in support of safe and healthy food selections in **40** food banks and pantries



WHY IT WORKS



Programs are **EVIDENCE-BASED.**



The program builds community, **leverages university resources** and **supports community health.**



We help make the healthy choice **the easy choice.**