

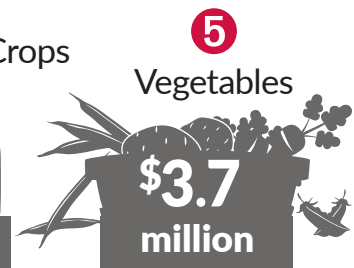
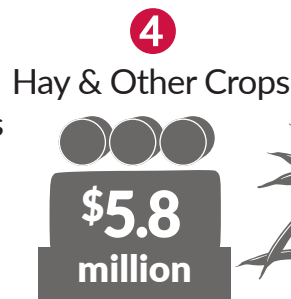
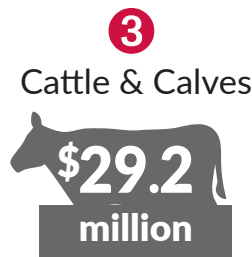
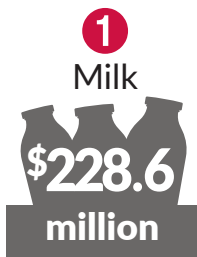


AGRICULTURE WORKS HARD FOR ▶ MANITOWOC COUNTY

Family-owned farms, food processors and agriculture-related businesses generate thousands of jobs and millions of dollars of economic activity for Manitowoc County, while contributing to local income and tax revenues.

Agriculture's annual impact:

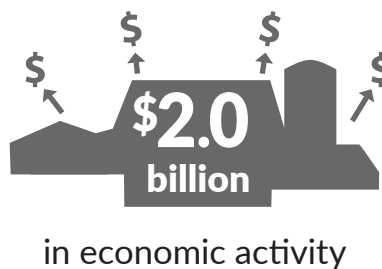
WHAT DO OUR FARMS PRODUCE?



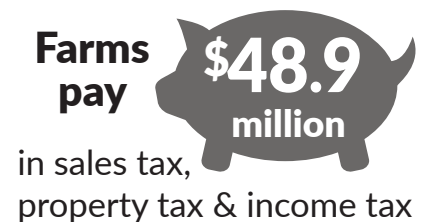
HOW MANY PEOPLE DOES AGRICULTURE EMPLOY?



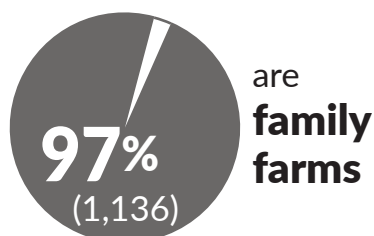
WHAT IS THE ECONOMIC IMPACT?



HOW MUCH TAX DOES AGRICULTURE CONTRIBUTE?



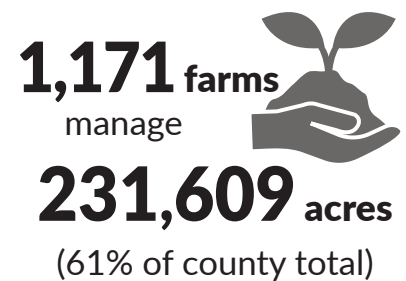
WHO OWNS THE FARMS?



HOW MUCH IS SOLD LOCALLY?



WHO TAKES CARE OF THE LAND?



THE AGRICULTURE SECTOR BENEFITS THE ENTIRE COUNTY

Manitowoc County is an agricultural powerhouse. The county is home to approximately 110,000 dairy cattle compared to about 80,000 people. Dairy farms of all sizes dot the rural landscape ranging in size from about 30 cows to over 5,000 cows. Located along Lake Michigan, the cool summer temperatures are ideal for milk production. As a leading milk producer, Manitowoc County routinely ranks in the top three Wisconsin counties and the top 25 U.S. counties in dairy production. Farmers are also stewards of the land with nearly 90% of the total cropland in the county utilizing a nutrient management plan.

Did you know?

MANITOWOC COUNTY IS
No. 5 in Wisconsin's
dairy industry



Extension
 UNIVERSITY OF WISCONSIN-MADISON

The University of Wisconsin-Madison Division of Extension is part of the local and statewide network of organizations and agencies that support Wisconsin's \$104.8 billion agriculture industry. Extension helps enhance the economic impact of agriculture by providing research-based information that increases farm profitability, improves food safety, reduces environmental impacts and expands agribusiness networks.

**For more information,
 please contact:**

UW-Madison Extension Manitowoc County
 4319 Expo Drive
 PO Box 935
 Manitowoc, WI 54221

920-683-4169

manitowoc.extension.wisc.edu

Copyright © 2019 by the Board of Regents of the University of Wisconsin System doing business as the University of Wisconsin-Madison Division of Extension. All rights reserved. An EEO/AA employer, the University of Wisconsin-Madison Division of Extension provides equal opportunities in employment and programming, including Title VI, Title IX, and ADA requirements.

Support for this work was provided by UW-Madison Division of Extension, Dairy Farmers of Wisconsin and Wisconsin Department of Agriculture, Trade and Consumer Protection (DATCP). Economic data (2017) provided by: Steven C. Deller, Professor, Department of Agriculture and Applied Economics, UW-Madison and Community Development Specialist, UW-Madison Extension. Contribution of Agriculture to the Wisconsin Economy: Updated for 2017 is available at <https://go.wisc.edu/i6947n>. Additional data was from the USDA 2017 Census of Agriculture. Publication production was completed through a collaboration of the Extension Natural Resources Institute and the Extension Office of Communications and Stakeholder Engagement.

Produced in cooperation with Dairy Farmers of Wisconsin, Wisconsin Department of Agriculture, Trade and Consumer Protection and Wisconsin Farm Bureau.

