



NEWS FROM EXTENSION

UW-MADISON DIVISION OF EXTENSION MANITOWOC COUNTY



The University of Wisconsin-Madison Division of Extension Dairy Program is your connection to researched-based dairy information which promotes healthy dairy cattle, profitable dairy farms, and competitiveness in the dairy industry.

October 2022- Ag Updates

IMPORTANT

Prototheca Bovis

Written by: Angie Ulness

Manitowoc County Agriculture Educator



Prototheca Bovis has been cultured in herds and is emerging as a threat to producers statewide. Prototheca has been linked to mastitis since 1952, however within the last five years the prevalence has significantly increased. Similar to Staph Aureus and Mycoplasma, Prototheca is hard to detect, has no known cure and it contagious by intermittently shedding from cow to cow.

Prototheca is a colorless, intracellular yeast-like microalgae that cause incurable acute or chronic mastitis in dairy cattle. There is no easy way to prevent Prototheca infections and no treatment for the mastitis. Frustration and economic losses are related to veterinary care expenses for treatment and services, reduced milk production, and premature removal of affected animals.

Click [here](#) for complete article.

Are you ready for your calves to go on the long haul?

Tina Kohlman | Extension Regional Dairy Educator | Fond du Lac, Sheboygan, Ozaukee, & Washington Counties

As operations grow, or focus more on the milking herd, it has become a necessary component in moving newborn calves from the farm to a separate calf raising facility, some being out of state. Handling and transporting these calves can be stressful. However, there is limited research on the impact of long-distance travel on a newborn calf's welfare.



Click [here](#) for full article

SAVE THE DATE

MIDWEST MANURE SUMMIT

02.28.23

Lambeau Field
Green Bay, WI

details at <http://midwestmanure.org>



An EEO/AA employer, University of Wisconsin-Madison Division of Extension provides equal opportunities in employment and programming, including Title VI, Title IX, the Americans with Disabilities Act (ADA) and Section 504 of the Rehabilitation Act requirements.

IN THE NEWS



Manitowoc County Forage Council
Winter Forage Feeding Meeting
Driscoll Farms
12011 County Road F
Newton, WI 543063
December 15, 2022 10:00 a.m. - 2:00 p.m.

An EEO/AA employer, University of Wisconsin-Madison Division of Extension provides equal opportunities in employment and programming, including Title VI, Title IX, the Americans with Disabilities Act (ADA) and Section 504 of the Rehabilitation Act requirements.



badger dairy insight

A webinar series to provide the latest research-based dairy information to improve animal welfare, breeding and genetic selection, automation and modernization, and nutritional decisions for producers, dairy workers and managers, ag professionals, and educators.

DATES ANNOUNCED!

Tuesdays from 1:00 pm – 2:30 pm

January 10, 24, and 31

February 7 and 21

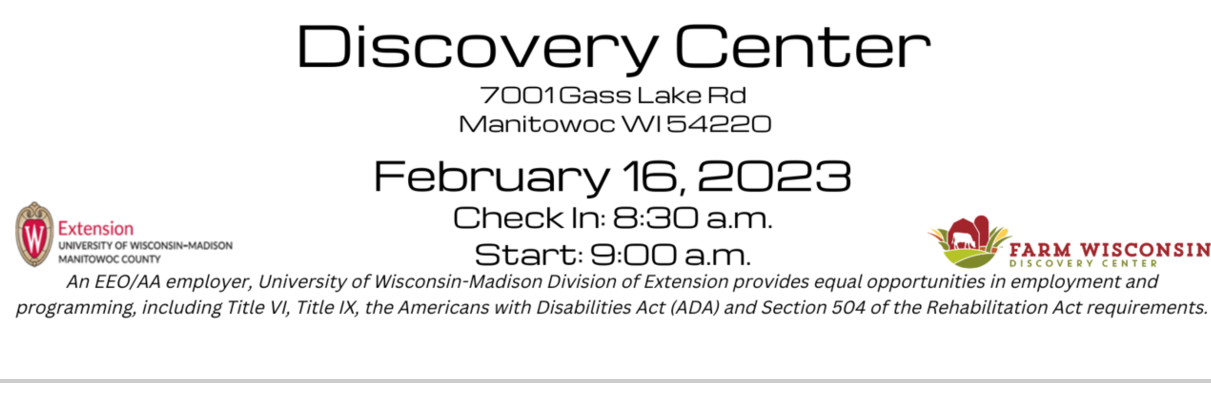
March 7, 14, and 21

Registration information to come!



Private Pesticide Applicator Training
Farm Wisconsin
Discovery Center
7001 Gass Lake Rd
Manitowoc WI 54220
February 16, 2023
Check In: 8:30 a.m.
Start: 9:00 a.m.

An EEO/AA employer, University of Wisconsin-Madison Division of Extension provides equal opportunities in employment and programming, including Title VI, Title IX, the Americans with Disabilities Act (ADA) and Section 504 of the Rehabilitation Act requirements.



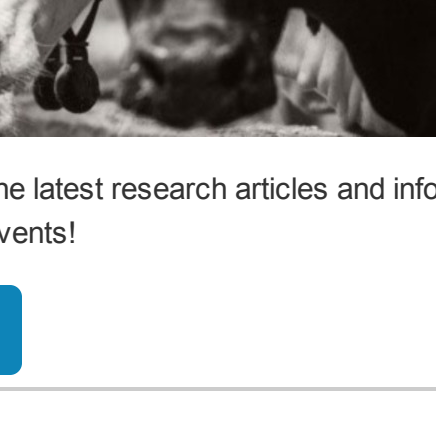
DAIRY E-NEWSLETTER

Sign-up for the Dairy Program Newsletter to receive the latest research articles and information about upcoming events!

[Sign-Up](#)

Hay Market Report

All hay prices quoted are dollars per ton FOB point of origin for alfalfa hay unless otherwise noted. The information presented in this report is compiled from public and private quality tested sales and reports in the Midwest.



[Click here for full report](#)



Dairy Situation and Outlook

The price of barrel cheddar cheese strengthened to above \$2 per pound from mid-September and continuing into October reaching as high as \$2.2450. The price of barrel cheese was well above 40-pound cheddar blocks being as much as \$0.2775 per pound higher. From mid-September and into October 40-pound blocks ranged from \$1.9675 per pound to just \$2.06. The price of dry whey weakened from \$0.4875 per pound mid-September to a low of \$0.41 in October before improving to \$0.4425. Higher average cheese prices will be enough to improve the Class III price from \$19.82 in September to around \$21.80 for October.

Full Article- [Click Here](#)



We are HIRING
DHIA Field Services
Manager

APPLY NOW
<https://bit.ly/dhicFieldMgr>

Eastern WI Dairy Herd Improvement Cooperative
questions: gschmah@ewdhic.org

DNR NOW ACCEPTING APPLICATIONS FOR ARPA WELL COMPENSATION AND WELL ABANDONMENT



If you have any questions regarding unused wells, please call the Soil and Water Dept. at 920.683.4183 or stop in the office, 4319 Expo Drive in Manitowoc.

Website: <https://manitowoc.extension.wisc.edu/agriculture/>

Email Address: angie.ulness@wisc.edu

Like us on Facebook: <http://www.facebook.com/extensionmanitowoccounty>

An EEO/AA employer, University of Wisconsin-Madison Division of Extension provides equal opportunities in employment and programming, including Title VI, Title IX, the Americans with Disabilities Act (ADA) and Section 504 of the Rehabilitation Act requirements.

UW-Madison Division of Extension Manitowoc County
Angie Ulness, Agriculture Educator
angie.ulness@wisc.edu - 920.683.4511

Share this email:



Manage your preferences | Opt out using TrueRemove®
Got this as a forward? Sign up to receive our future emails.
View this email online.

4319 Expo Dr.
Manitowoc, WI | 54221-0935 US

This email was sent to .
To continue receiving our emails, add us to your address book.



[Subscribe](#) to our email list.