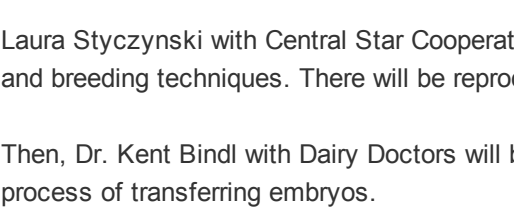


The University of Wisconsin-Madison Division of Extension Dairy Program is your connection to researched-based dairy information which promotes healthy dairy cattle, profitable dairy farms, and competitiveness in the dairy industry.

March 2023- Ag Updates

IMPORTANT



USDA Announces Conservation Reserve Program Signup for 2023

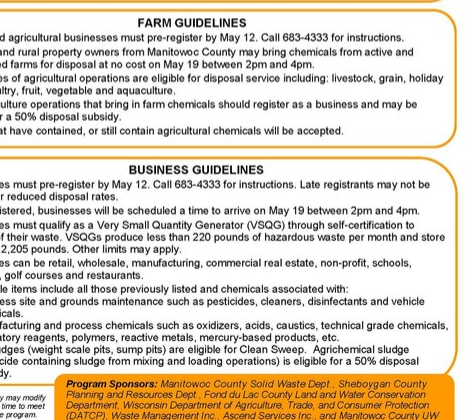
Agriculture Secretary Tom Vilsack announced that agricultural producers and private landowners can begin applying for the Conservation Reserve Program (CRP) General Signup starting February 27 through April 7, 2023. CRP is a cornerstone voluntary conservation program offered by the U.S. Department of Agriculture (USDA) and a key tool in the Biden-Harris administration's effort to address climate change and help agricultural communities invest in the long-term well-being of their land and natural resources.

Click [here](#) for more details.

Free Youth Repro Clinic

FREE youth repro clinic for all dairy youth in Manitowoc and Sheboygan Counties!

April 1, 2023 @ Farm Discovery Center – LTC classrooms
10am-2pm



Laura Styczynski with Central Star Cooperative will be presenting on the reproductive tract anatomy and breeding techniques. There will be reproductive tracts for hands on learning.

Then, Dr. Kent Bindl with Dairy Doctors will be presenting the process of Conventional Flushing and process of transferring embryos.

After lunch, Dr. Steve Cove and Laci Hlyok from Valley Veterinary Clinic will be presenting the process of In Vitro Fertilization along with services with Boviteq.

Box lunches will be provided from Jimmy Johns. Please RSVP by March 20 to Angie Unless: angie.unless@wisc.edu with the number of people attending and what lunches you would like. Parents are welcome.

We will only be ordering what everyone orders. Lunch is sponsored by Boviteq. It includes 8-inch sub, chips, cookie, pickle and soda/water.

The Pepe – ham & cheese
Turkey Tom – Turkey
J.J.B.L.T. - Bacon

Hazardous Waste Clean Sweep 2023

More common items like automotive products, household cleaning products, and lawn care products are prohibited from being placed in the hazardous waste bins. Items that are prohibited include: aerosols, paints, solvents, oils, antifreeze, and other liquids.

Items that are accepted include: household appliances, electronics, small motors, and other non-hazardous items.

Items that are not accepted include: tires, auto parts, and other large items.

Items that are accepted include: household appliances, electronics, small motors, and other non-hazardous items.

Items that are not accepted include: tires, auto parts, and other large items.

Items that are accepted include: household appliances, electronics, small motors, and other non-hazardous items.

Items that are not accepted include: tires, auto parts, and other large items.

Items that are accepted include: household appliances, electronics, small motors, and other non-hazardous items.

Items that are not accepted include: tires, auto parts, and other large items.

Items that are accepted include: household appliances, electronics, small motors, and other non-hazardous items.

Items that are not accepted include: tires, auto parts, and other large items.

Items that are accepted include: household appliances, electronics, small motors, and other non-hazardous items.

Items that are not accepted include: tires, auto parts, and other large items.

Items that are accepted include: household appliances, electronics, small motors, and other non-hazardous items.

Items that are not accepted include: tires, auto parts, and other large items.

Items that are accepted include: household appliances, electronics, small motors, and other non-hazardous items.

Items that are not accepted include: tires, auto parts, and other large items.

Items that are accepted include: household appliances, electronics, small motors, and other non-hazardous items.

Items that are not accepted include: tires, auto parts, and other large items.

Items that are accepted include: household appliances, electronics, small motors, and other non-hazardous items.

Items that are not accepted include: tires, auto parts, and other large items.

Items that are accepted include: household appliances, electronics, small motors, and other non-hazardous items.

Items that are not accepted include: tires, auto parts, and other large items.

Items that are accepted include: household appliances, electronics, small motors, and other non-hazardous items.

Items that are not accepted include: tires, auto parts, and other large items.

Items that are accepted include: household appliances, electronics, small motors, and other non-hazardous items.

Items that are not accepted include: tires, auto parts, and other large items.

Items that are accepted include: household appliances, electronics, small motors, and other non-hazardous items.

Items that are not accepted include: tires, auto parts, and other large items.

Items that are accepted include: household appliances, electronics, small motors, and other non-hazardous items.

Items that are not accepted include: tires, auto parts, and other large items.

Items that are accepted include: household appliances, electronics, small motors, and other non-hazardous items.

Items that are not accepted include: tires, auto parts, and other large items.

Items that are accepted include: household appliances, electronics, small motors, and other non-hazardous items.

Items that are not accepted include: tires, auto parts, and other large items.

Items that are accepted include: household appliances, electronics, small motors, and other non-hazardous items.

Items that are not accepted include: tires, auto parts, and other large items.

Items that are accepted include: household appliances, electronics, small motors, and other non-hazardous items.

Items that are not accepted include: tires, auto parts, and other large items.

Items that are accepted include: household appliances, electronics, small motors, and other non-hazardous items.

Items that are not accepted include: tires, auto parts, and other large items.

Items that are accepted include: household appliances, electronics, small motors, and other non-hazardous items.

Items that are not accepted include: tires, auto parts, and other large items.

Items that are accepted include: household appliances, electronics, small motors, and other non-hazardous items.

Items that are not accepted include: tires, auto parts, and other large items.

Items that are accepted include: household appliances, electronics, small motors, and other non-hazardous items.

Items that are not accepted include: tires, auto parts, and other large items.

Items that are accepted include: household appliances, electronics, small motors, and other non-hazardous items.

Items that are not accepted include: tires, auto parts, and other large items.

Items that are accepted include: household appliances, electronics, small motors, and other non-hazardous items.

Items that are not accepted include: tires, auto parts, and other large items.

Items that are accepted include: household appliances, electronics, small motors, and other non-hazardous items.

Items that are not accepted include: tires, auto parts, and other large items.

Items that are accepted include: household appliances, electronics, small motors, and other non-hazardous items.

Items that are not accepted include: tires, auto parts, and other large items.

Items that are accepted include: household appliances, electronics, small motors, and other non-hazardous items.

Items that are not accepted include: tires, auto parts, and other large items.

Items that are accepted include: household appliances, electronics, small motors, and other non-hazardous items.

Items that are not accepted include: tires, auto parts, and other large items.

Items that are accepted include: household appliances, electronics, small motors, and other non-hazardous items.

Items that are not accepted include: tires, auto parts, and other large items.

Items that are accepted include: household appliances, electronics, small motors, and other non-hazardous items.

Items that are not accepted include: tires, auto parts, and other large items.

Items that are accepted include: household appliances, electronics, small motors, and other non-hazardous items.

Items that are not accepted include: tires, auto parts, and other large items.

Items that are accepted include: household appliances, electronics, small motors, and other non-hazardous items.

Items that are not accepted include: tires, auto parts, and other large items.

Items that are accepted include: household appliances, electronics, small motors, and other non-hazardous items.

Items that are not accepted include: tires, auto parts, and other large items.

Items that are accepted include: household appliances, electronics, small motors, and other non-hazardous items.

Items that are not accepted include: tires, auto parts, and other large items.

Items that are accepted include: household appliances, electronics, small motors, and other non-hazardous items.

Items that are not accepted include: tires, auto parts, and other large items.

Items that are accepted include: household appliances, electronics, small motors, and other non-hazardous items.

Items that are not accepted include: tires, auto parts, and other large items.

Items that are accepted include: household appliances, electronics, small motors, and other non-hazardous items.

Items that are not accepted include: tires, auto parts, and other large items.

Items that are accepted include: household appliances, electronics, small motors, and other non-hazardous items.

Items that are not accepted include: tires, auto parts, and other large items.

Items that are accepted include: household appliances, electronics, small motors, and other non-hazardous items.

Items that are not accepted include: tires, auto parts, and other large items.

Items that are accepted include: household appliances, electronics, small motors, and other non-hazardous items.

Items that are not accepted include: tires, auto parts, and other large items.

Items that are accepted include: household appliances, electronics, small motors, and other non-hazardous items.

Items that are not accepted include: tires, auto parts, and other large items.

Items that are accepted include: household appliances, electronics, small motors, and other non-hazardous items.

Items that are not accepted include: tires, auto parts, and other large items.

IN THE NEWS

Manitowoc County IMPLEMENTS OF HUSBANDRY



Who: Farmers, Custom Harvesters, Town Officials

When: Wednesday March 15th 6:30 PM

Where: Town of Franklin Town Hall,
14134 Taus Rd. Cato, WI

This is an open forum to ask questions with a State Patrol Inspector, Representatives of the Manitowoc County Sheriffs Department and individual township officials. This is meant to help open up lines of communication.

Valuably Informed Thriving Agricultural Leader



You Are **VITAL** to your farm.

Take charge and **LEAD** the way.

April 5, 2023
Farm WI Discovery Center
7001 Gass Lake Rd, Manitowoc
10:00 a.m. - 3:00 p.m.

Extension UNIVERSITY OF WISCONSIN-MADISON

SAVE THE DATE

As an EEO/AA employer, University of Wisconsin-Madison Division of Extension provides equal opportunities in employment and programming, including Title VI, Title IX, the Americans with Disabilities Act (ADA), and Section 504 of the Rehabilitation Act requirements.

Topics/Speakers Include:

10:00 am - Registration

10:30 am - The 3 High I's: Inflation, Interest, Inputs
- Amanda Kroil & Toni Sorenson, GreenStone FCS

11:30 am - Cows in Transition
- Angie Unless, Extension, Manitowoc County-Agriculture Educator

12:00 pm - Lunch

1:00 pm - Exploring Value-Added Venture for Long-Term Sustainability
- Stephanie Plaster, Extension, Farm Management Outreach Specialist

1:45 pm - Break

2:00 pm - Going Green on the Farm: Women-Led Entrepreneurship
- Amanda Knoener, Kress-Hill Sunflower Farm
- Shelly Mayer, Meyer Beef & Folk Song Farms
- Tammy & Brianna Fritsch, Two Guernsey Girls Creamery

3:00 pm - Wrap up and Adjourn

"A day away for agriculture women to connect and share common experiences and challenges."

SAVE THE DATE!!!



Cover Crop POKER RUN

Hosted by: BETWEEN THE LAKES DEMONSTRATION FARM NETWORK

TUESDAY APRIL 4TH

Stop anytime 10:30am -12:00pm

LIBERTYLAND FARMS INC. & NEIGHBORING FARMS

Planting Cover Crops Fast and Affordably

See the green-up of 5 nearby cover crop fields, all planted with different cover crop species and planting or manure application methods. Grab a playing card at each field. Prizes for the top hands!

PRIZES FOR THE TOP 3 HANDS

WATCH FOR THE MAP & MORE INFORMATION SOON!

As an EEO/AA employer, University of Wisconsin-Madison Division of Extension provides equal opportunities in employment and programming, including Title VI, Title IX, the Americans with Disabilities Act (ADA), and Section 504 of the Rehabilitation Act requirements.

Here's where the Poker Run starts and ends: <https://goo.gl/maps/a4Rw6J4H5eBndXnS8>

Dairy Promotion PIZZA PARTY

No presale tickets! Just pay at the door!

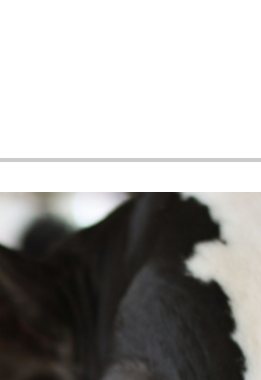
Tuesday, April 4, 2023 • 6:00-9:00 pm
Manitowoc Expo Center
4921 Expo Drive, Manitowoc

Tickets: \$5

Eat in featuring Luigi's Pizza
Includes all you can eat pizza, milk and ice cream

Questions or concerns-Contact Joanna at 920-901-5523 or a committee member

Sponsored by:
Manitowoc County Dairy Promotion Committee



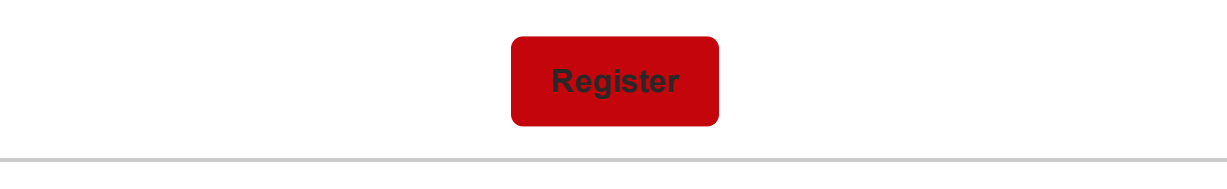
Manitowoc County UW Agriculture Alumni

Save the Date

Banquet April 11, 2023

Farm WI Discovery Center
7001 Gass Lake Rd, Manitowoc

** Invites to follow **



MANITOWOC COUNTY BREAKFAST ON THE FARM

TWIN CITIES VUE DAIRY FARM
3416 Stone Road, Manitowoc

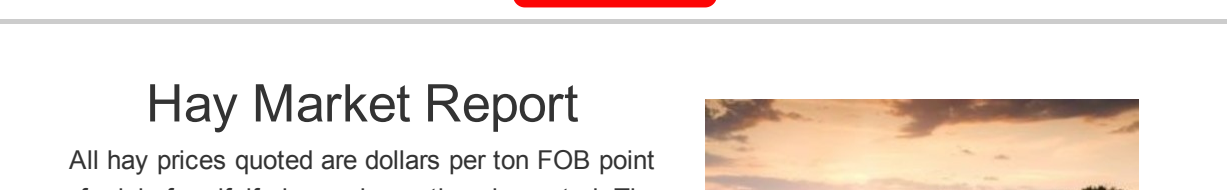
DON'T MISS IT!

11 JUN 8:00 AM-NOON



Farm Management News

farms.extension.wisc.edu



Farm Management Fridays are back!

Almost every agricultural industry is in a position to be thinking about investing in the future of the farm business. This video series intends to highlight the decisions leaders make about their business, resources to inform them, and additional programs to build skills.

The first three videos will cover topics including:

- Is Farm Succession in your future? Start planning now!
- Using farm financials to make informed decisions
- Utilizing information shared in a commodity outlook

Receive the most up-to-date information on topics including dairy and livestock production, forages, and farm management resources from Extension's Agriculture virtual education offerings. Your farm-ready research! There is no charge to participate in the sessions, but pre-registration is required to allow access.

Register

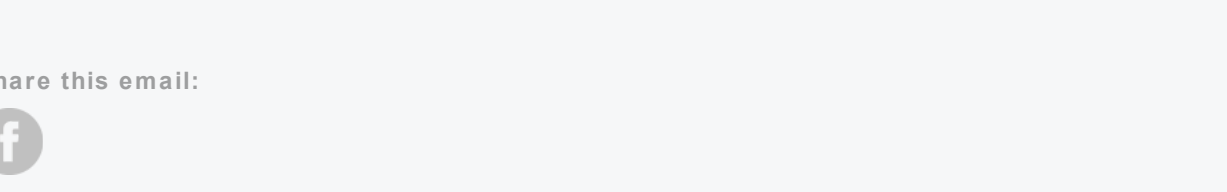
badger dairy insight

A webinar series to provide the latest research-based dairy information to improve animal welfare, breeding and genetic selection, automation and modernization, and nutritional decisions for producers, dairy workers and managers, ag professionals, and educators.

Tuesdays from 1:00 pm – 2:30 pm

March 14, and 21

Register for these webinars and more at: go.wisc.edu/FarmReadyResearch



DAIRY E-NEWSLETTER

Sign-up for the Dairy Program Newsletter to receive the latest research articles and information about upcoming events!

Sign-Up

Hay Market Report

All hay prices quoted are dollars per ton FOB of origin for alfalfa hay unless otherwise noted. The information presented in this report is compiled from public and private quality tested sales and reports in the Midwest.

Click here for full report

Dairy Situation and Outlook

Cheese prices have moved up and down during January and February but the trend is downward. Barrel cheddar cheese averaged \$1,680.3 per pound in January and is now \$1,600. Forty-pound cheddar blocks averaged \$2,002.4 per pound in January and are now \$1,960. Dry whey which was \$0.30's per pound in January have been \$0.415 to \$0.46 per pound in February. As a result Class III will which was \$20.50 in December fell to \$19.43 in January. The February Class III will be even lower around \$17.90. The Class III price has fallen a long way from the record \$25.21 last May.

Full Article- [Click Here](#)

SCHOLARSHIPS APPLY NOW!

2023 Manitowoc Market Animal Scholarship- [Click here](#) for details. Deadline is April 2, 2023.

2023 Ag Alumni Scholarship- [Click here](#) for details. Deadline is April 1, 2023.

2023 Donald R. Peterson Scholarship- [Click here](#) for details. Deadline is April 1, 2023.

2023 William Borgwardt Memorial Scholarship- [Click here](#) for details. Deadline is March 31, 2023

Website: <https://manitowoc.extension.wisc.edu/agriculture/>

Email Address: angie.unless@wisc.edu

Like us on Facebook: <http://www.facebook.com/extensionmanitowoccounty>

An EEO/AA employer, University of Wisconsin-Madison Division of Extension provides equal opportunities in employment and programming, including Title VI, Title IX, the Americans with Disabilities Act (ADA) and Section 504 of the Rehabilitation Act requirements.

UW-Madison Division of Extension Manitowoc County
Angie Unless, Agriculture Educator
angie.unless@wisc.edu - 920.683.4511

Share this email:

Manage your preferences | Opt out using TrueRetnovals

Got this as a forward? Sign up to receive our future emails.

View this email online.

4319 Expo Dr.
Manitowoc, WI | 54221-0935 US

This email was sent to .
To continue receiving our emails, add us to your address book.

Subscribe to our email list.